

Non-Template Molecules Designed For Open-Ended Evolution: Supplementary Material

Chris Gordon-Smith

SimSoup
c.gordonsmith@gmail.com

April 25, 2011

1 Introduction

This document provides supplementary material for the ECAL 2011 paper “Non-Template Molecules Designed For Open-Ended Evolution”.

2 Molecule Structures

This section presents full size diagrams showing key molecular structures.

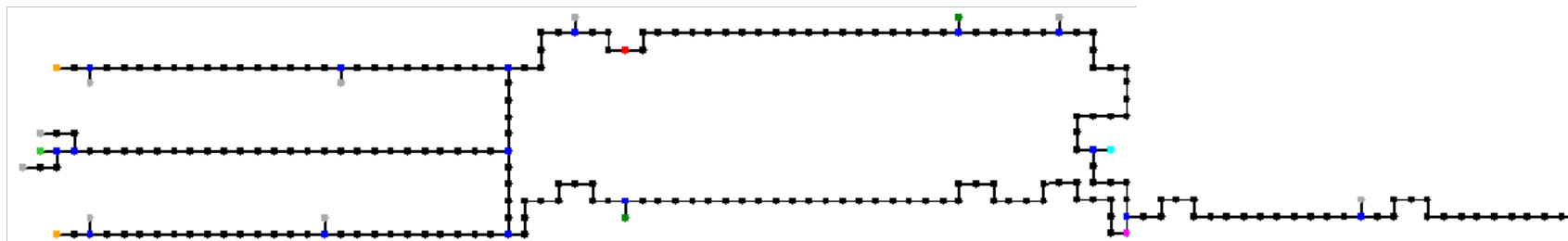


Figure 1: Monomer M_{01}

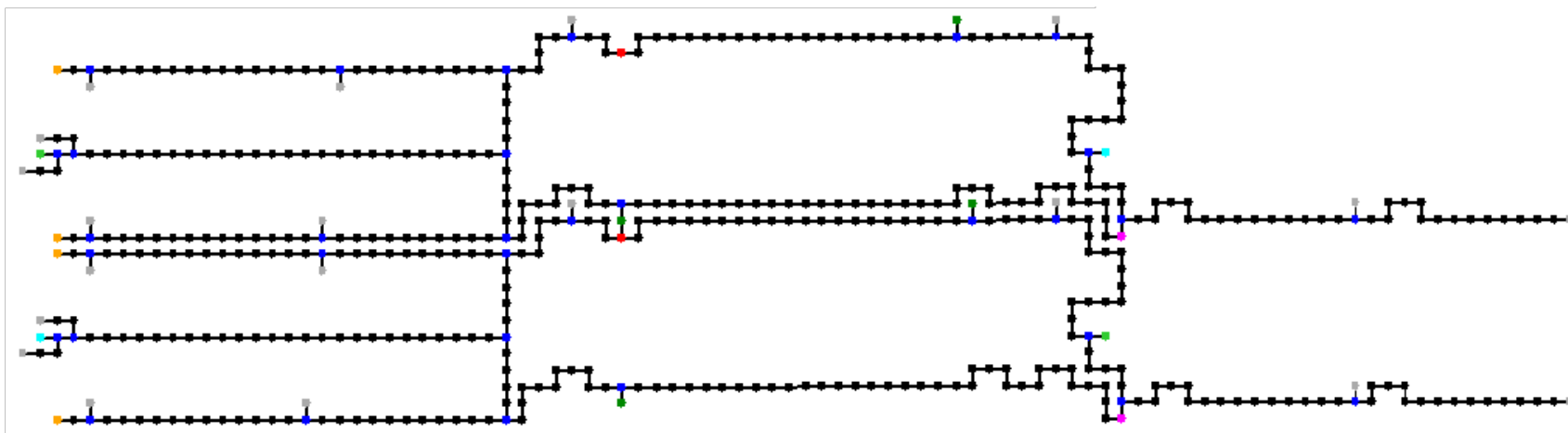


Figure 2: Polymer P_{01} (length 2)

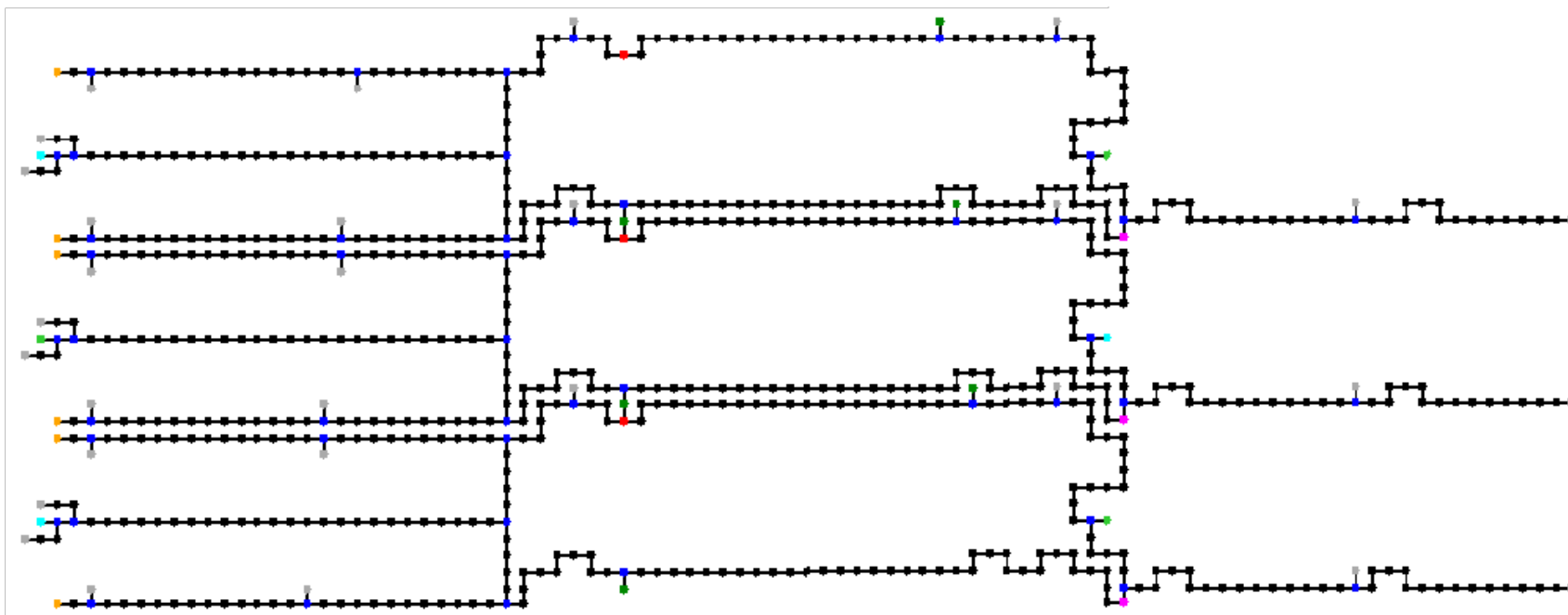


Figure 3: Polymer P_{02} (length 3)

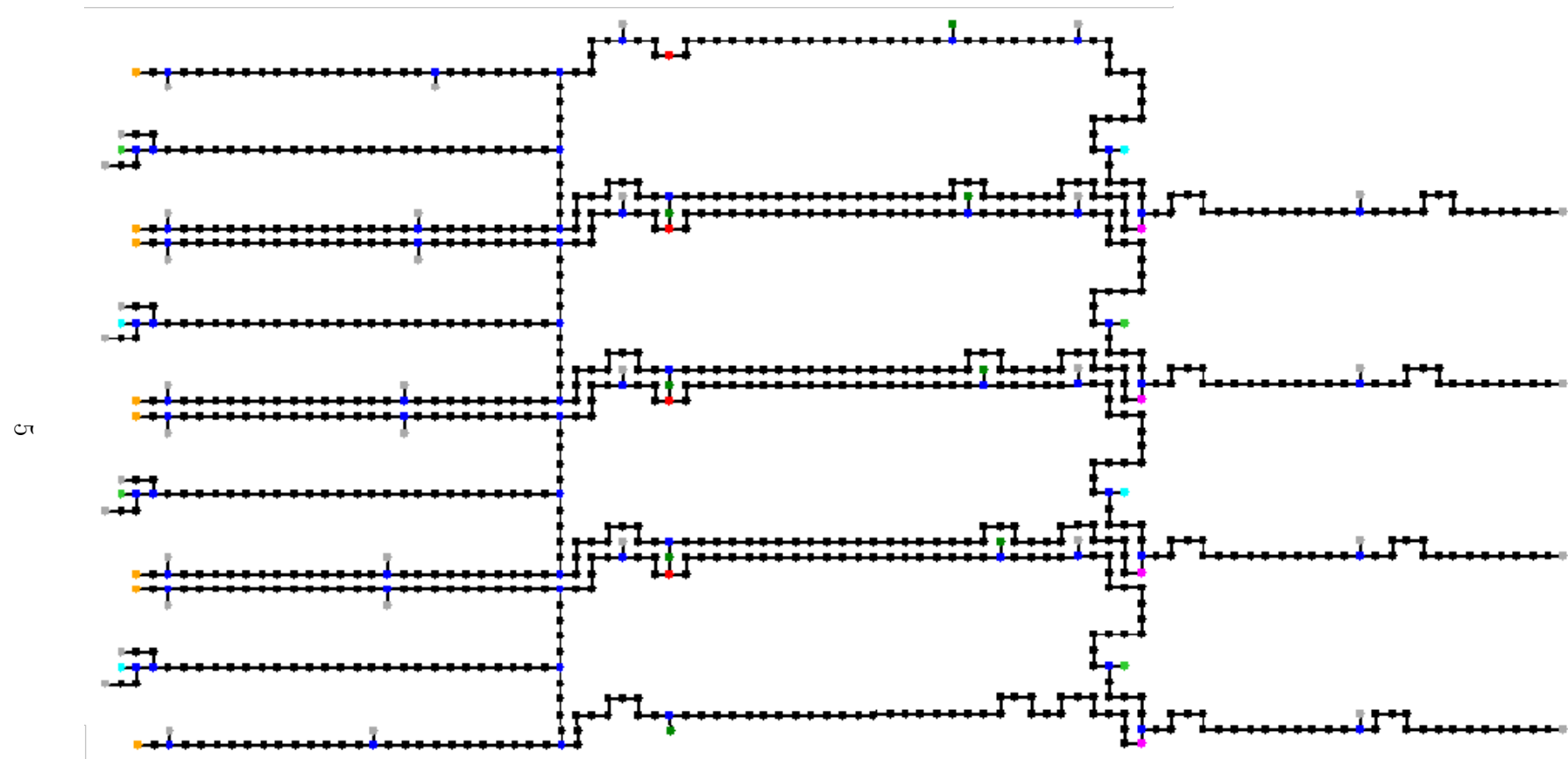


Figure 4: Polymer P₀₃ (length 4)

6

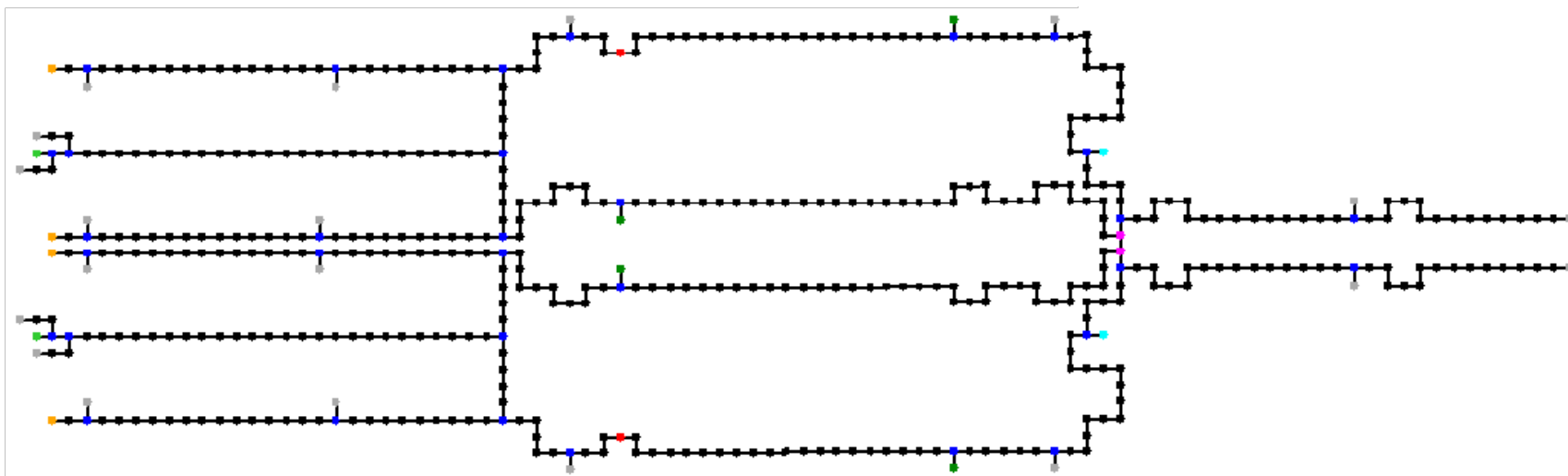


Figure 5: Closed Dimer D_{01}